

Aspiration Connection, 3200

If you have not read the **General Plumbing Instructions** for replacing plumbing parts on the KinExA® please do so now before continuing.

The following **Parts and/or Tools** are required to complete this installation:

- | | |
|--|--|
| [1] <i>Aspiration Connection, 3200</i> (344206) | [1] <i>10-32 Tan Nut</i> (346201) |
| [1] <i>1/4"-28 Black Nut</i> (346001) OR [1] <i>1/4"-28 Headless Brown Nut</i> (346011) | [1] <i>1/16" Tan Ferrule</i> (347113) |
| [4] <i>1/16" White Ferrules</i> (347016) | [1] <i>1/4" Deep Socket</i> (015902) |
| [3] <i>M6 Black Nuts</i> (346101) | [1] <i>15 in-oz Torque Wrench</i> (024140) |

Note: The blue and green highlighting has been added to the picture for clarification; the *Aspiration Connection Tubing* you have been provided is clear.

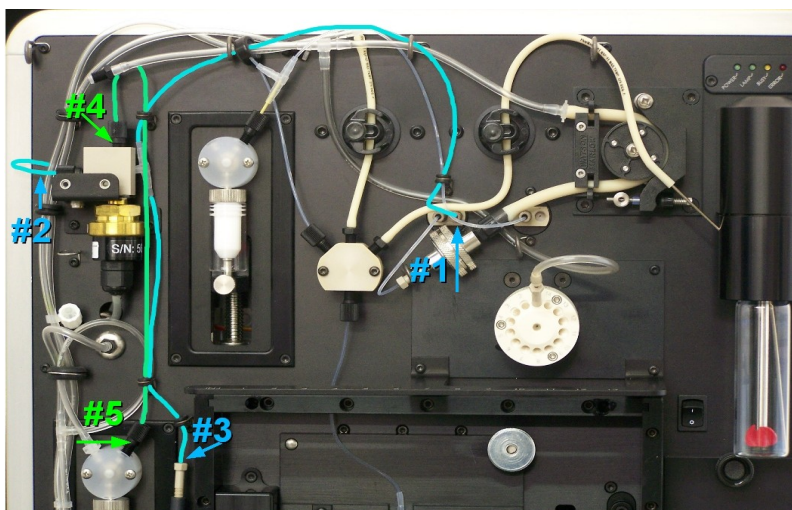


Figure 1: Aspiration Connection routing diagram.

- Run the longer line (from the arm of the *T Hose Barb*) up through the small grommet next to the *Injection Pump*. Continue to route the tubing through the *Tubing Support* above the *Injection Pump*, into the *Injection T Coil*, through the next *Tubing Support*, and down to the grommet above the left *Solenoid Valve*. Cross over the *Injection T Line* before attaching to the **right** side of the left *Solenoid Valve* using a *1/16" White Ferrule* with a *1/4"-28 Black Nut* **OR** a *1/4"-28 Headless Brown Nut* (**Figure 1, #1**). Refer to **Figures 2** and **3** to see a close up of this connection and to determine the appropriate nut for your *Solenoid Valve*.
- Orient the *T Hose Barb* so that it is sitting flush with the front panel and the base is pointing toward the *Pressure Transducer*. Run the tubing from the **base** of the *T Hose Barb* behind the *Pressure Transducer* and the *Buffer/Waste Lines* then loop the tubing back around and into the side of the *Pressure Transducer* using an *M6 Black Nut* and a *1/16" White Ferrule* (**Figure 1, #2**).
- Route the shorter tubing down through the [2] grommets next to the *Aspiration Pump* and into the top of the *Union* using a *1/16" Tan Ferrule* and a *10-32 Tan Nut* (**Figure 1, #3**). Torque the *10-32 Nut* with the *15 in-oz Torque Wrench* and the *1/4" Deep Socket*.
- Insert the separate line (represented in green) into the top of the *Pressure Transducer* using an *M6 Black Nut* and a *1/16" White Ferrule*. Loop the tubing above and then down through the grommet next to the *Injection Pump*, down through the grommet above the *Aspiration Pump*, and into the **right** side of the *Aspiration Pump Valve* using an *M6 Black Nut* and a *1/16" White Ferrule* (**Figure 1, #4 and #5**).

Aspiration Connection, 3200

Important: Use the *1/4"-28 Black Nut (346001)* for any Instruments that have the **original Solenoid Valves** installed on them (Figure 2).

Note: Make sure the tubing is flush with the nut so it does not clog the valve. Use the *1/4"-28 Headless Brown Nut (346011)* for the revised Solenoid Valves (Figure 3).

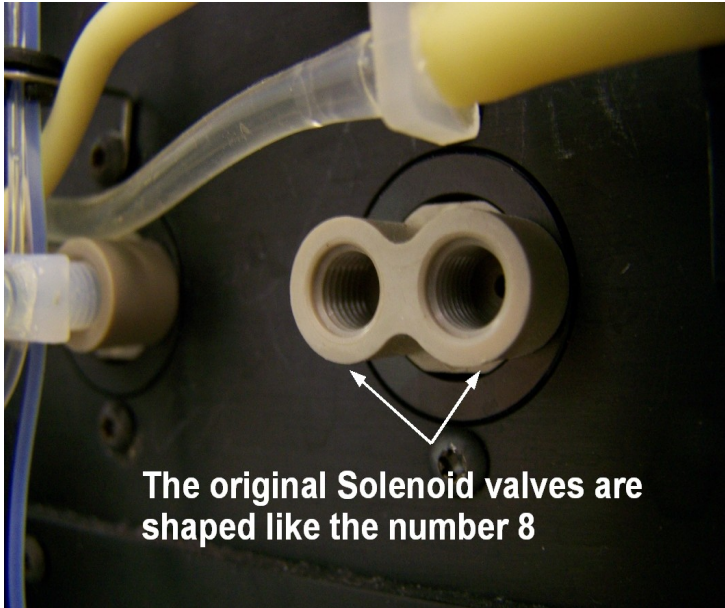


Figure 2: Close up of original Solenoid Valve.

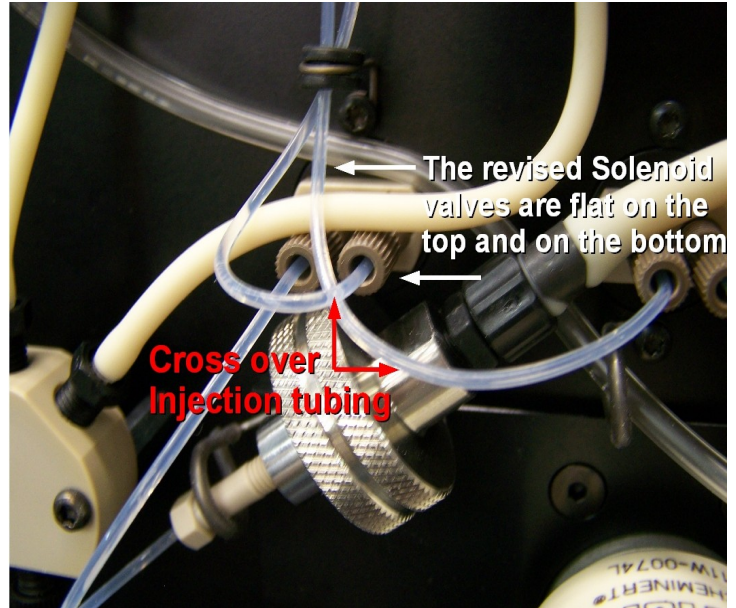


Figure 3: Close up of revised Solenoid Valve.